

ICHF Events Measures

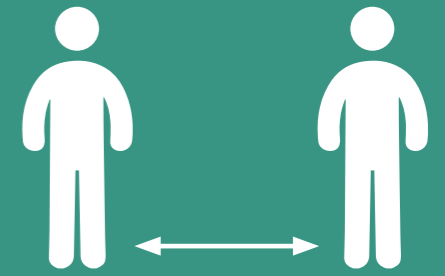
Member of the Association of Event Organisers (AEO) and part of the working groups leading the events industry in the safe re-opening of events.



Risk assessment with measures determined by the Covid-19 alert system



Managed visitor flow according to social distancing rules



The wearing of facemasks is mandatory



Multiple hand washing facility points throughout the show



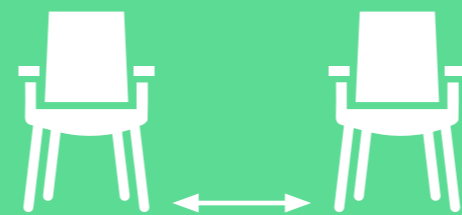
Flexible opening hours to control visitor flow



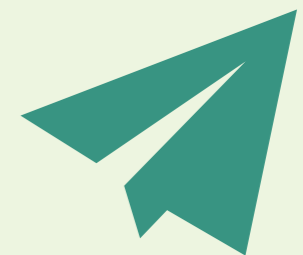
Deep cleaning schedule agreed with the venue



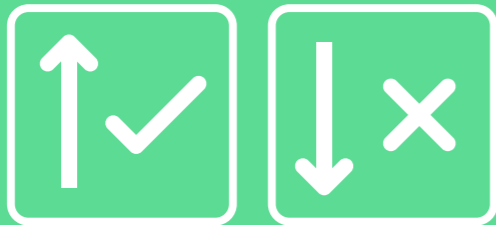
Larger workshop and theatres, adequate spacing between each chair, according to social distancing rules



Pre show guidance issued to visitors and exhibitors



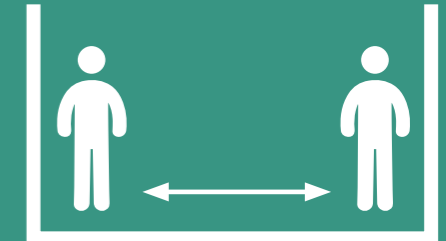
Clear signage and stewarding to control the volume of visitors within the hall



Experienced organiser team to provide advice and enforce measures



Wider aisles to accommodate social distancing



What can you do?

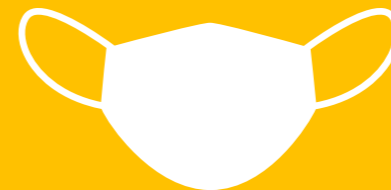
Exhibitors advised to only take Contactless Payment sales



Exhibitors must provide disinfectant and hand sanitiser for their stand



Provide staff with facemasks



Use the same staff each day where possible

